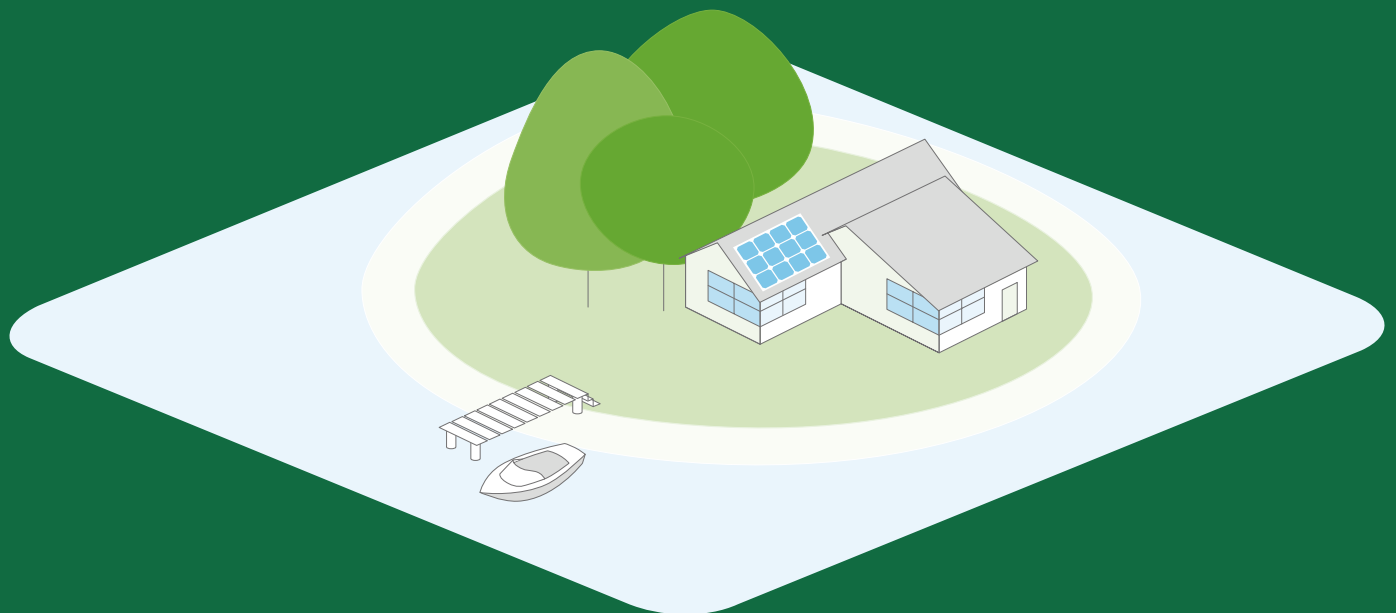
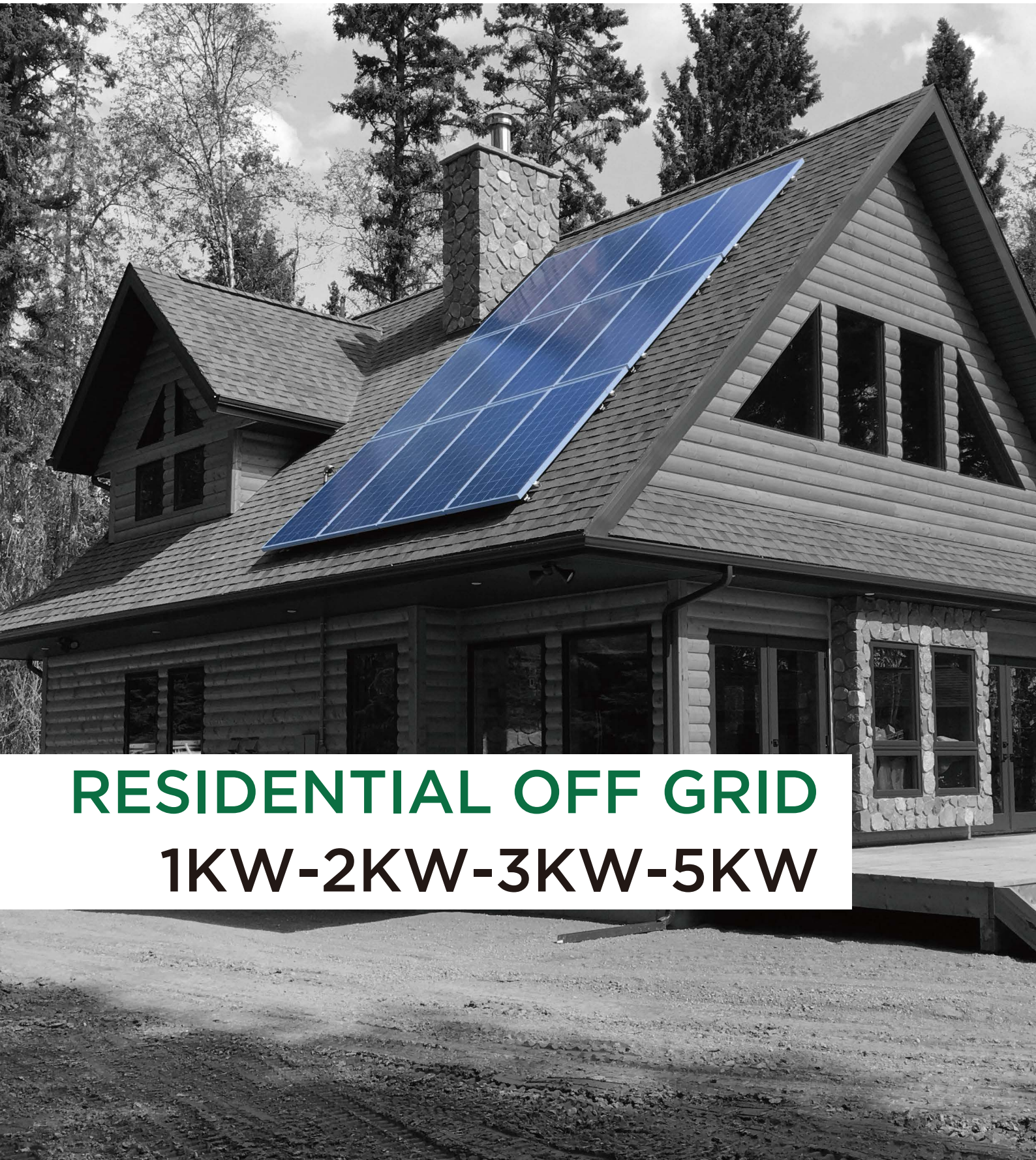




ALL IN ONE SOLAR SYSTEM

RESIDENTIAL OFF GRID
PHOTOVOLTAIC SOLAR SYSTEM KIT





RESIDENTIAL OFF GRID
1KW-2KW-3KW-5KW



Product Description

Total electrical independence starts here. Sunpal Power has carefully designed and engineered all of our pre-packaged off-grid solar power systems to be faster and easier to install. Our Off-Grid solar kits produce zero emissions, are noiseless, and equipped with all-in-one packaging solution for quick and easy installation.

Standard Grid-tie systems will not provide electricity directly to your house during a power outage due to safety regulations (anti-islanding) even if the solar modules are producing DC current. Our Off-Grid systems are independent of the standard utility grid, and can typically deliver the equivalent expectations of the traditional grid.

Whether you will be using an off-grid solar system for your remote cabin, your place of business, or your full-time residence, Sunpal Power has an off-grid solution that can fit almost any installation requirement. Sunpal Power's Off-grid kits have the capability to be expanded if future energy storage is required.

Product Benefits

- Become completely energy independent
- Reduce the burning of fossil fuels for a healthier environment
- Eliminate the problems of grid blackouts

Common Application

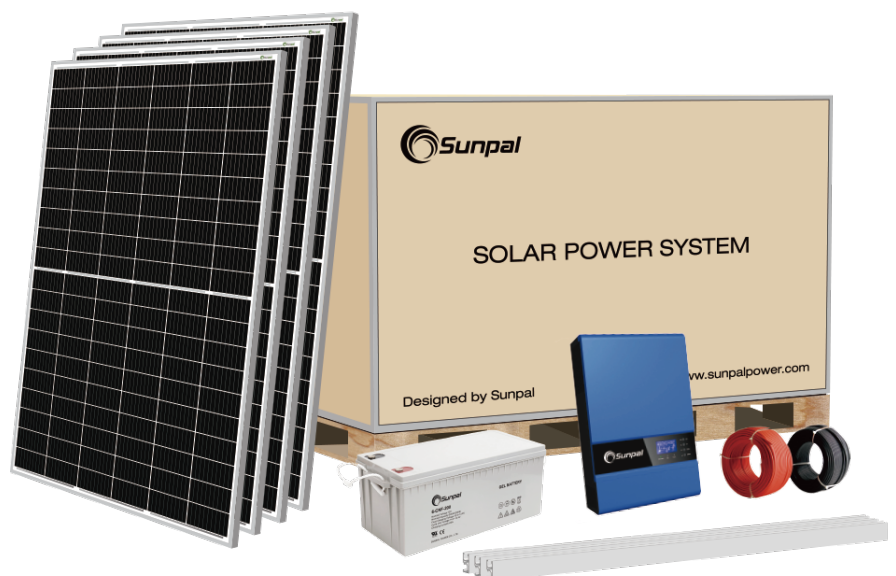
- Installation sites where bringing in the electricity from the grid is too expensive or difficult
- Locations where liquid fuel costs are too high or difficult to maintain
- Those looking to be completely independent from the grid
- Those who cannot afford to lose power or have power outages

RESIDENTIAL OFF-GRID

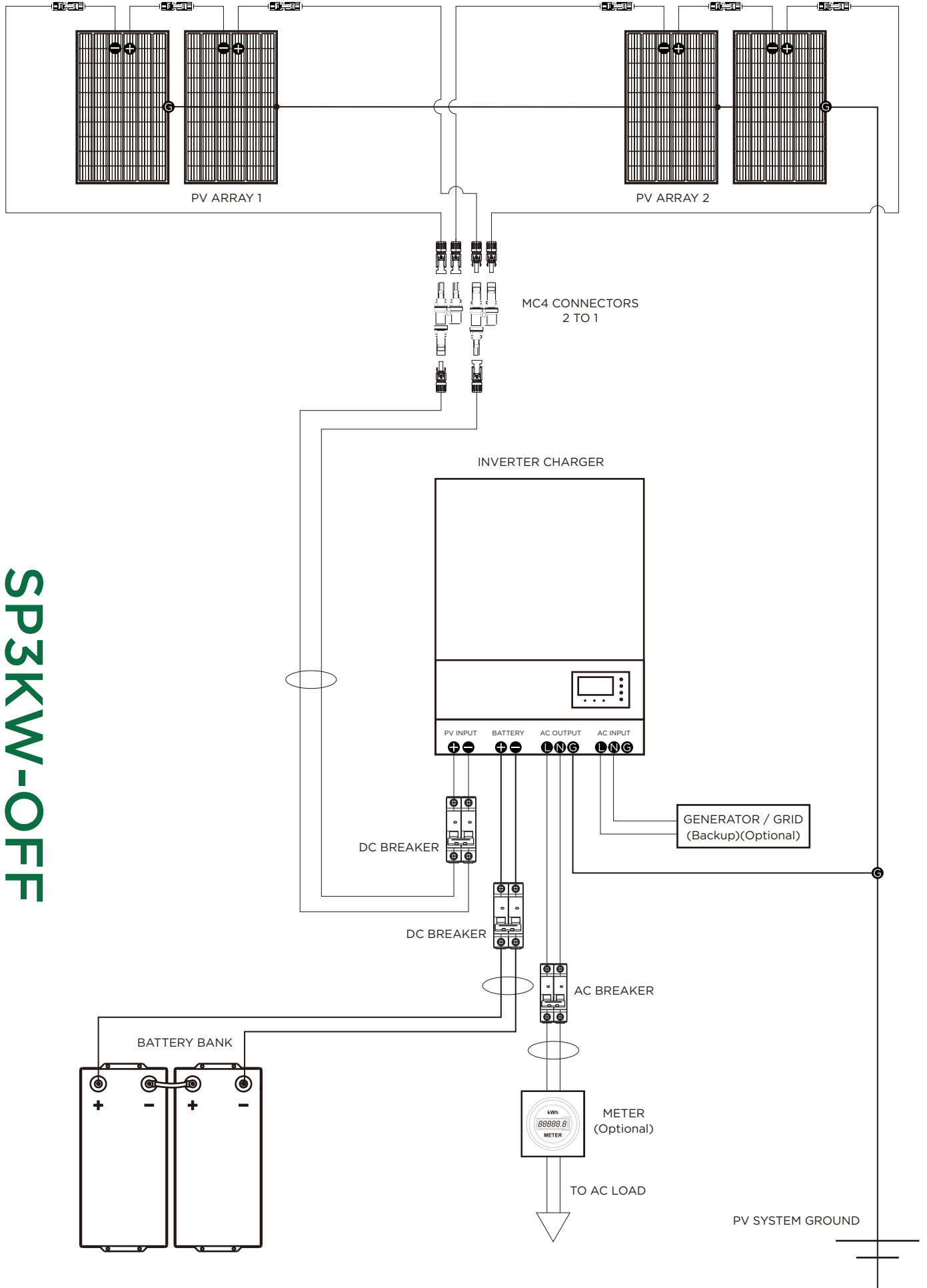
PV Kits

Include

- Solar modules
- Off-Grid inverter/charger
- Custom mounting system
- Battery bank
- Main disconnect box
- PV, battery bank & ground wiring harnesses
- Wire management kits



PRODUCT MODEL	SP1KW-OFF	SP2KW-OFF	SP3KW-OFF	SP5KW-OFF
PV System Size Nominal (Inverter Power) (kWp)	1	2	3	5
PV MODULE SPECIFICATIONS (*Mono)				
Power (W)			340	
Vmp (V)			34.2	
Voc (V)			41.1	
Isc (A)			10.6	
Imp (A)			9.94	
Dimensions (L x W x H) (mm)			1698*1004*35	
PV Module weight (kg)			18.7	
Certifications			CE / TUV (IEC 61215 & IEC 61730) / UL (UL61730)	
*Polycrystalline PV modules also available up on request				
INVERTER SPECIFICATIONS				
Inverter Continuous Power (W)	1000	2000	3000	5000
Peak Power (W)	2000	4000	6000	10000
Adjustable Model			MPPT+Inverter / AC+Inverter / MPPT+AC+Inverter	
AC Voltage (V)			110 - 250 (Adjustable)	
AC Frequency (Hz)			50 / 60 (Adjustable)	
Battery Voltage (V)	12	24	24	48
MPPT Charge Current (A)	25	50	50	80
PV Input Power (W)	≤500	≤1800	≤1800	≤4500
PV Voltage Range (V)	20	30	30	60
AC Charge Current (A)	25	15	15	15
Maximum Charge Current (A)	65	55	55	75
Wave Form			Pure Sine Wave	
Typical Transfer Time (Ms)			10 ms (For Personal Computers); 20 ms (For Home Appliances)	
Dimensions (W x H x D) (mm)	95*240*316	100*272*385	100*272*385	130*295*455
Inverter Weight (kg)	5	7	7	11
BATTERY BANK SPECIFICATIONS				
Battery Type			Lead Acid Gel (VRLA)	
Battery Voltage (V)			12	
Battery Bank Voltage (V)	12	12	24	48
Battery Capacity (Ah)			200	
Battery Bank Capacity (Ah)	200	200	200	400
Battery Bank Power - Total (Wh)	2400	2400	4800	19200
Battery Bank Power - 50% DOD (Wh)	1200	1200	2400	9600
Battery Dimensions (L x W x H) (mm)			522 x 240 x 224	
Battery Weight (kg)			60	
Full Cycles (50% DOD)			1500	
Total Batteries - *storage can be increased	2	2	4	8
Connection			Series	
Certifications			CE / RU / ISO 14001 / OHSAS 18001	
BOS				
Main Disconnect Box(or Breakers)			Yes	
*PV Wire Harness - 4mm ² (m)	100	200	200	300
*Ground Wire - 4mm ² (m)	10	20	20	30
*Extra wire is available up request				
SYSTEM LAYOUT				
Number of Modules	1	2	4	9
Number of Inverters			1	
PV Array Surface Area (m ²)	1.7	3.4	6.8	15.3
PV Array Weight (kg)	18.7	37.4	74.8	168.3
PV Module	No. of PV Modules / String	1	2	3
String	Total Strings	1	2	3
Configuration	String Voc (V)	41.1	82.2	123.3
600VDC	String Vmp (V)	34.2	68.4	102.6
	String Imp (A)	9.94	9.94	9.94
PRODUCTION ESTIMATES (kWh AC)				
*Projectd Yearly Output at 4 PSH / Day	1.2	2.3	4.6	10.4
*Projectd Yearly Output at 5 PSH / Day	1.4	2.9	5.8	13.0
*Projectd Yearly Output at 6 PSH / Day	1.7	3.5	6.9	15.6
*Based on 85% system efficiency (formula = DC Power x Peak Sunshine Hours / Day x System Efficiency) (PSH = Peak Sunshine Hours)				
SYSTEM OPTIONS				
Monitoring Device			WiFi/RS485	
PV Module Type			Monocrystalline(Poly also available upon request)	
Mounting System Types			Metal Roof,Asphalt Shingle,Tile Roof,Tin Roof,Flat Concrete	
AC Back Up Input			Utility Grid / Power Generator	
Battery			12V Gel / 2V Gel / Tubular Gel (OPzV) / Lithium Ion	
SHIPPING				
PV Kit Weight (kg)	120	160	463.4	696.5
PV Kit Shipping Size	1.7 x 0.45 x 1	1.7 x 0.45 x 1	1.7 x 0.6 x 1	1.7 x 0.75 x 1
Total Number of Boxes	1	1	2	2





Phone: +86 551 6586 5992
WhatsApp: +86 183 0554 5727
Email: info@sunpalpower.com

SUNPAL POWER CO.,LTD.
West Changjiang Road,Shushan District,
Hefei City,Anhui Province,China.

www.sunpalpower.com